

Strategies for + and - two digit numbers

SPLITTING

$$35 - 24 = 11$$

$$10 + 1 = 11$$

$$28 + 12 = 40$$

$$30 + 10 = 40$$

- addends broken into place value
- tens are combined. Ones are combined

FRIENDLY NUMBERS

$$35 - 24 = 11$$

$$35 - 20 = 15$$

$$15 - 4 = 11$$

$$28 + 12 = 40$$

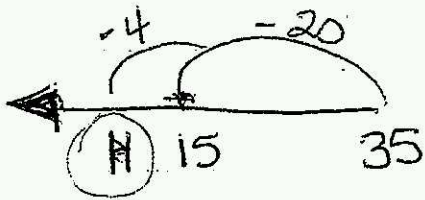
$$(28 + 2 = 30) (12 - 2 = 10)$$

$$30 + 10 = 40$$

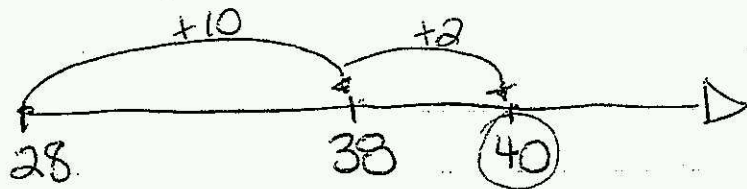
- adjust one or both addends by adding or subtracting to make friendly numbers

over

JUMPING



$$35 - 24 \\ (20 + 4)$$



$$28 + 12 \\ (10 + 2)$$

- Keeping one addend whole and breaking the other into chunks.